

Products Introduction

PTH1



SPECIFICATION :

For Intel Tejas CPU

Thermal Resistance : 0.3 °C/W

Total dimension : 90(L) x 90(W) x75(H) mm

1) heat sink : 90(L) x 90(W) x75(H) mm

92 x 38 mm System Fan Specification :

1) Speed :5700rpm

2) Voltage : 12V

3) Air Flow : 120.8 CFM (max)

4) Noise : 56.9 dBA

5) Bearing : two Balls

Heat Sink Material :

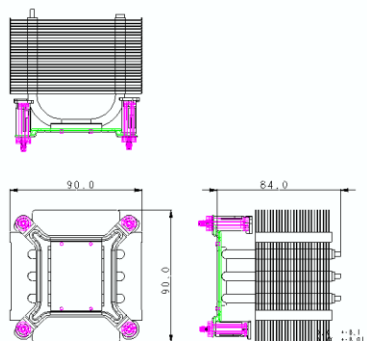
1) Cu Base, Al Fin

2) Ø 6 heat pipe x 3

Weight: 355 g

Interface Material : SC102, Dow Corning.

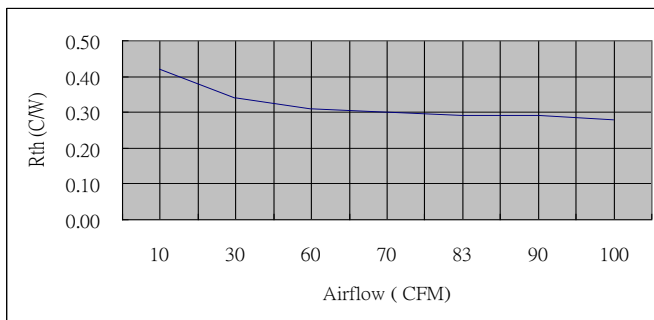
DRAWING



Thermal Performance With Airflow

R_{th} (°C/W) is between IHS and Ambient

Cross-section of Air duct is 92 x 92 mm



6F., No.75, Jian'an St., Xinzhuang Dist., New Taipei City 242, Taiwan (R.O.C.)

TEL: 886-2-22065314, 886-928549984

<http://www.twcooling.com>

FAX: 886-2-22065314

E-MAIL : sales@twcooling.com